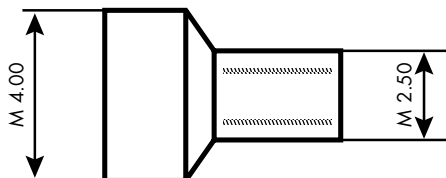


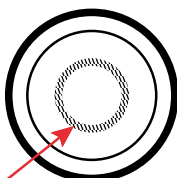
# RLX Tubus und Dichtungen

## Werkzeug

Ref. **226762** Lady 5.30



Ref. **227025**



Montre ancienne avec tube ancien.

*Old watch with old tube.*

Alte Uhr mit altem Rohr.

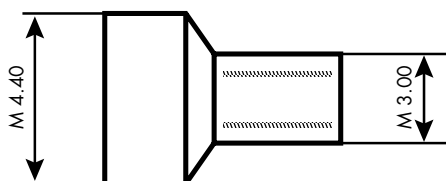
*Reloj antiguo con tubo antiguo.*

Orologio antico con tubo antico.

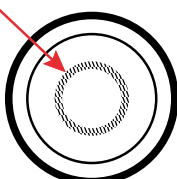
*Relógio antigo com tubo antigo.*

**Dichtung**  
Ref. **232121**

Ref. **226764** Gent 6.00



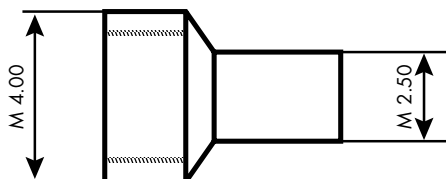
Ref. **227026**



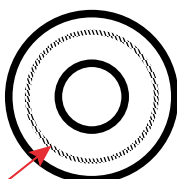
Fluted\*

**Dichtung**  
Ref. **232122**

Ref. **226763** Lady 5.30



Ref. **227027**



Montre ancienne avec tube nouveau.

*Old watch with new tube.*

Alte Uhr mit neuem Rohr.

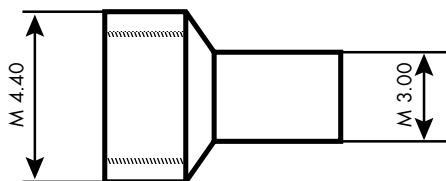
*Reloj antiguo con tubo nuevo.*

Orologio antico con tubo nuovo.

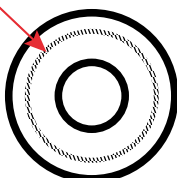
*Relógio antigo com tubo novo.*

**Dichtung**  
Ref. **232123**

Ref. **226765** Gent 6.00



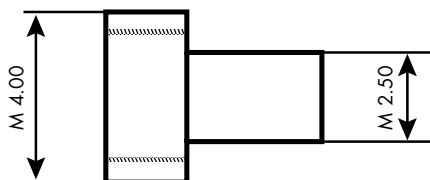
Ref. **227029**



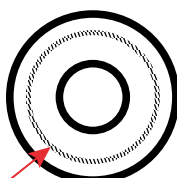
Fluted\*

**Dichtung**  
Ref. **232124**

Ref. **226766** Lady 5.30



Ref. **227028**



Montre nouvelle avec tube nouveau.

*New watch with new tube.*

Neue Uhr mit neuem Rohr.

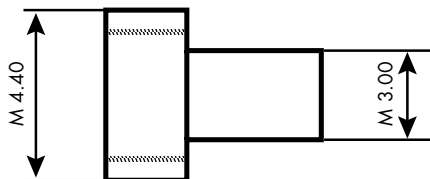
*Reloj nuevo con tubo nuevo.*

Orologio nuovo con tubo nuovo.

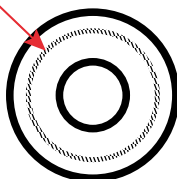
*Relógio novo com tubo novo.*

**Dichtung**  
Ref. **232125**

Ref. **226767** Gent 6.00



Ref. **227030**



Fluted\*

**Dichtung**  
Ref. **232127**

\*Fluted : cannelé - geriffelt - estriado - zigrinato - estriado