

Information on the H.MH-110 Hammer Handpiece

Micromotor Kit K.1090 or K.1053

The hammer handpiece works with either the HP4-917 Control Box for the H.MH-170 Rotary Micromotor Handpiece or the HP4-817 Dual Port control Box for the H.MH-150 Brushless Micromotor Handpiece.

For complete operating instructions, please read the Owners Manual that comes with the control box.

Connecting the Handpiece:

With the Power Switch in the "Off" position and the Rotation Selection Switch in the "Forward" position, attach the micro motor handpiece to the control box by plugging the coiled cord into the Handpiece Connection Port on the lower front control panel. Use keyway for proper alignment when plugging in the cord. NEVER plug the handpiece into the Variable Speed Foot Control Connection Port on Back of Control Box.

Always use the H.MH-110 handpiece in the forward direction. Never use in reverse.

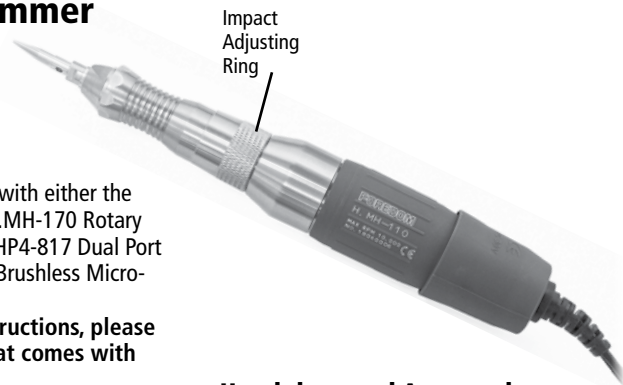
Connecting Power Cord: Put the On/Off Selector Switch in the "OFF" position and turn the dial speed control to the "OFF" speed position. Put the Rotation Selection Switch in the Forward Position. Operating the handpiece with the switch in the reverse position can severely damage the handpiece. Now plug in the power cord to an AC current outlet.

Attaching Handpiece Accessories:

This Hammer Handpiece comes with the following accessories and adapters:

- Anvil Point (installed) and wider pin
- Two HP10177 Anvil Points with Threaded Shanks
- HPH8-214 Graver Holder & Hex Key
- Open End Wrench (5mm)
- HP10562 Narrow Pin, to tighten Anvil Points

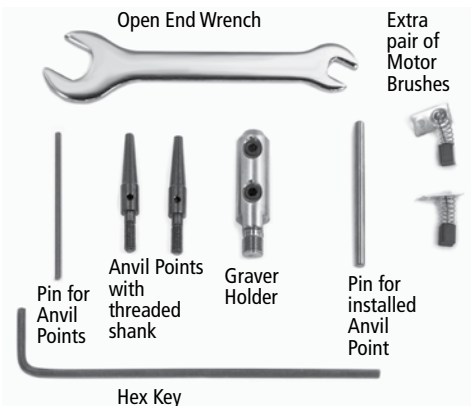
6/18 Revision



Handpiece and Accessories:

Three anvil points are supplied so that the tips can be shaped or modified for different setting operations. To use the anvil points, thread in the anvil point adapter and tighten with wrench. Thread an anvil point in to it and tighten it with a pin in its cross hole. The HPH8-214 Graver Holder screws into the front end of the handpiece and converts it into a power engraving tool. It comes with a 5/64" hex key.

Impact Adjustment: The force of impact can be increased or decreased by turning the metal ring while the handpiece is either off or running. Test the impact on a piece of metal or material similar to the work piece until the correct combination of speed and impact is obtained.



Maintenance

The H.MH-110 has permanently lubricated ball bearings that do not require lubrication.

Putting even a small amount of oil into the handpiece can damage it.

Cleaning Handpiece: Use the handpiece in as clean and dust free an environment as possible. A cloth with a small amount of alcohol solution can be used to clean outside of handpiece if necessary.

Do not use any other cleaning fluids or immerse handpiece in any liquid.

Checking/Changing Motor Brushes:

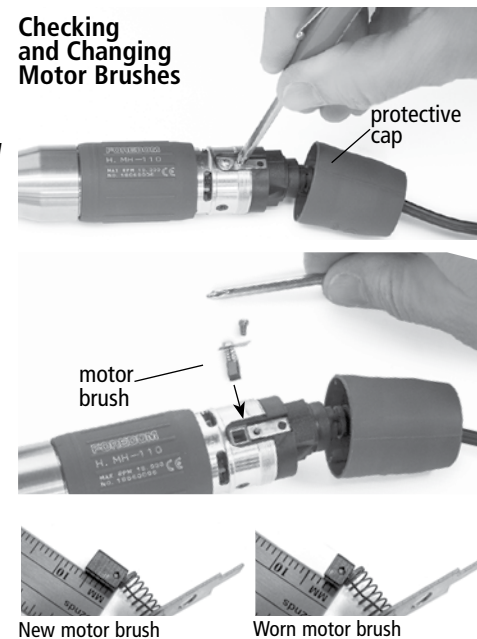
A spare set of motor brushes (HP4-163) is supplied with each handpiece. Depending on how long the handpiece is used each day, the brushes should be checked for wear periodically (about every 200 hours of use) and replaced when the brush is less than 2mm (5/64") long.

To Check/Replace Motor Brushes:

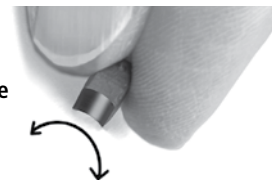
1. Unscrew protective cap from rear of motor by turning it counterclockwise while gripping handpiece body.
2. With small Phillips head screwdriver remove screws and brush assemblies one at a time. Check length of carbon brush from spring to curved side of brush.

Remove and examine each motor brush. If one motor brush shows wear — replace both of them. If the motor brush is long enough to continue using be sure that when you reinsert a motor brush the curve aligns with the contour of the outside of the housing and the curve of the motor armature within.

Checking and Changing Motor Brushes



When you reinsert a motor brush the curve should align with the handpiece contour



3. Re-insert brush assembly or new brush assembly into brush tube. Replace and tighten screws.
4. Screw protective cap back onto rear of motor housing so that top of brush assembly is completely covered.

FOREDOM®

Foredom Electric Company
16 Stony Hill Road
Bethel, CT 06801 USA
www.foredom.net

F-1260 n

6/18

AK101 6-pc Anvil Point Kit

These 6 threaded anvil points fit the H.MH-110 Hammer Handpiece and the individual points are also available. Ask your Foredom dealer about this kit or visit our website to find out more.

