



Cal. VX3KG

ϕ 23.3 mm
H 2.62 mm

Items	Rev.	Page
Specifications	00	1
Appearance	00	2
Casing	00	3
Hand fitting	00	4
Hand setting stem	00	5
Dial-01	00	6-01
Dial-02	00	6-02
Casing ring	00	7

Date: 31/Jul./'08

MOVEMENT SPECIFICATIONS

CAL. VX3KG

Analog Quartz 10 1/2" Slim Movement / Two hands(H/M) with Calendar

1. MOVEMENT DIMENSIONS

*Outside diameter	ϕ 24.00mm × 21.30mm(3-9H) × 21.50mm(12-6H)
*Casing diameter	ϕ 23.30mm × 21.30mm(3-9H) × 21.50mm(12-6H)
*Total height	2.62mm (including battery)

2. TIME STANDARD

*Type of quartz oscillator	Tuning fork
*Frequency of quartz oscillator	32,768 Hz
*Accuracy	±20 seconds per month (on wrist)
*Operating temperature range	-5°C to +50°C
*Regulation device	Nil (Pre-adjusted)

3. INDICATOR / FUNCTIONS

*2 Hands	Hour / Minute
*Calendar	Instant setting device for date calendar
*Reset switch	
*Setting mechanism	Crown at normal position : Free Crown pulled out 1st click : Instant date change Crown pulled out 2nd click : Time setting / Reset

4. FEATURES

*Jewels	1 Jewel
*Anti-magnetism	Over 1600A/m (Direct current magnetic field)
*Maximum unbalance of hands	Minute hand : 60 mg·mm Hour hand : 50 mg·mm

5. BATTERY

*Type / Size	Silver oxide battery / ϕ 9.5mm × t 2.0mm
*Recommended battery	SR920SW (Maxell, Panasonic, Sony, Seizaiken)
*Nominal voltage	1.55 V
*Battery life	Approx. 5 years
*Driving current consumption	Approx. 0.90 μ A
*Operation stopping voltage	1.1 V

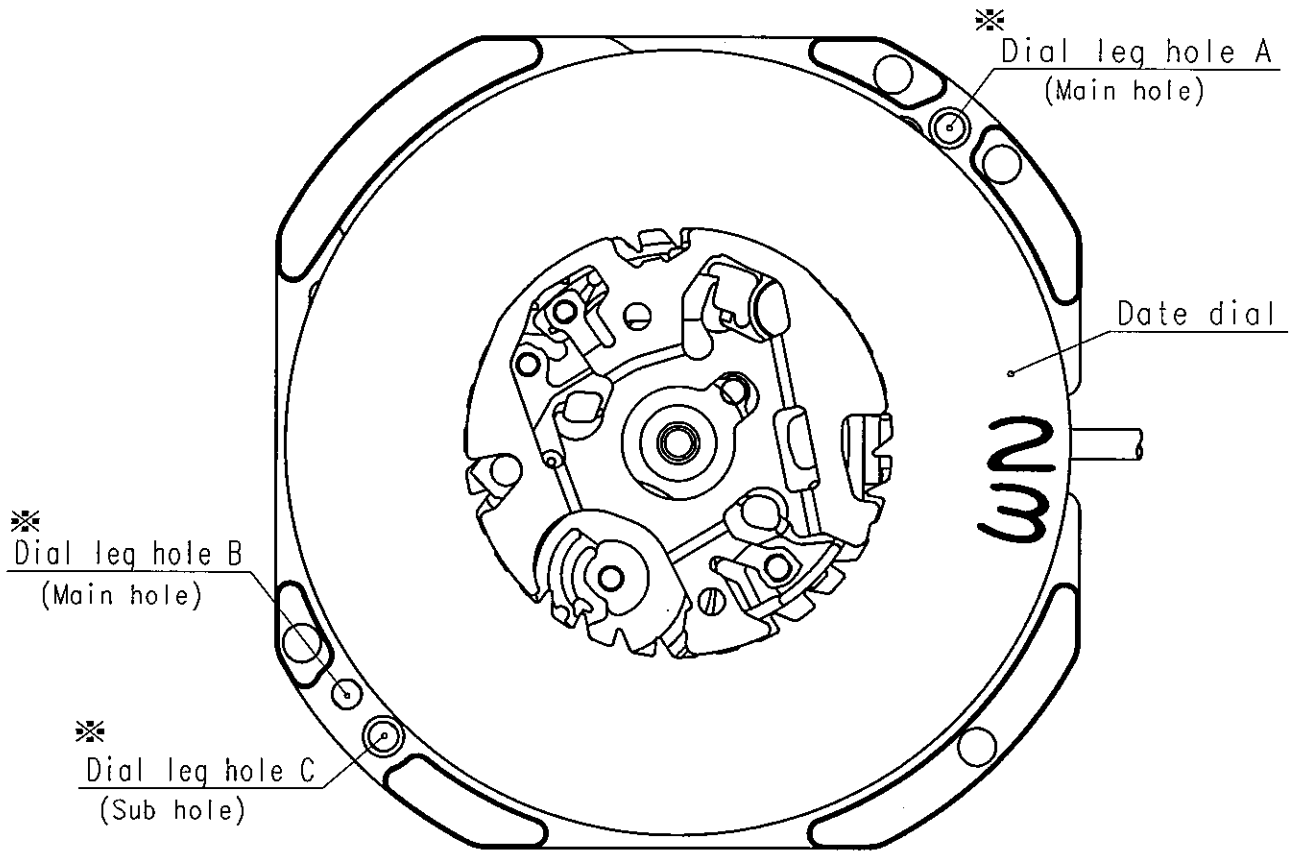
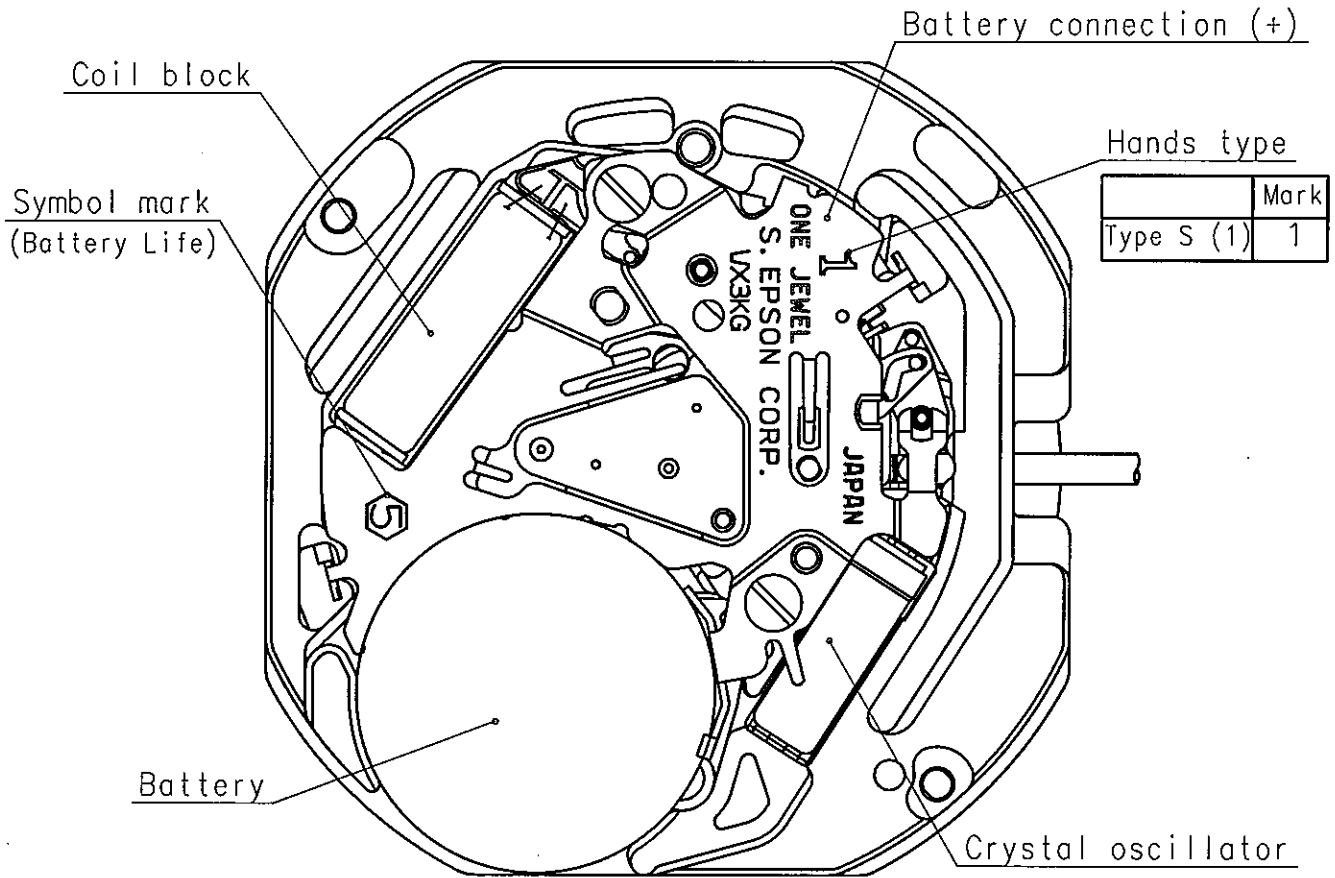
6. SEPARATED PARTS (Parts code)

*Hand setting stem	0351177 or 0351577
*Battery	SR920SW

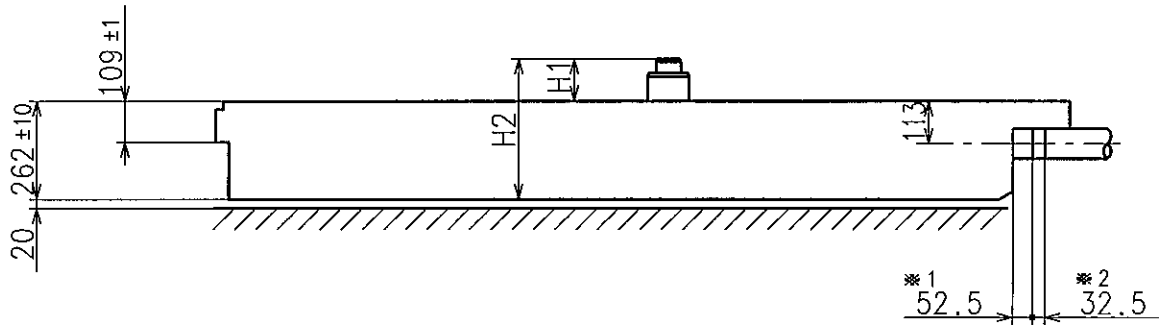
7. TEST OF ACCURACY

*Equipment to be used	SEIKO quartz tester QT-99, Greiner quartz timer-C , Witschi Q-tester 4000
*Duration of measurement	10 seconds
*Microphone to be used	Electromagnetic detection type

All specifications are subject to change without notice.

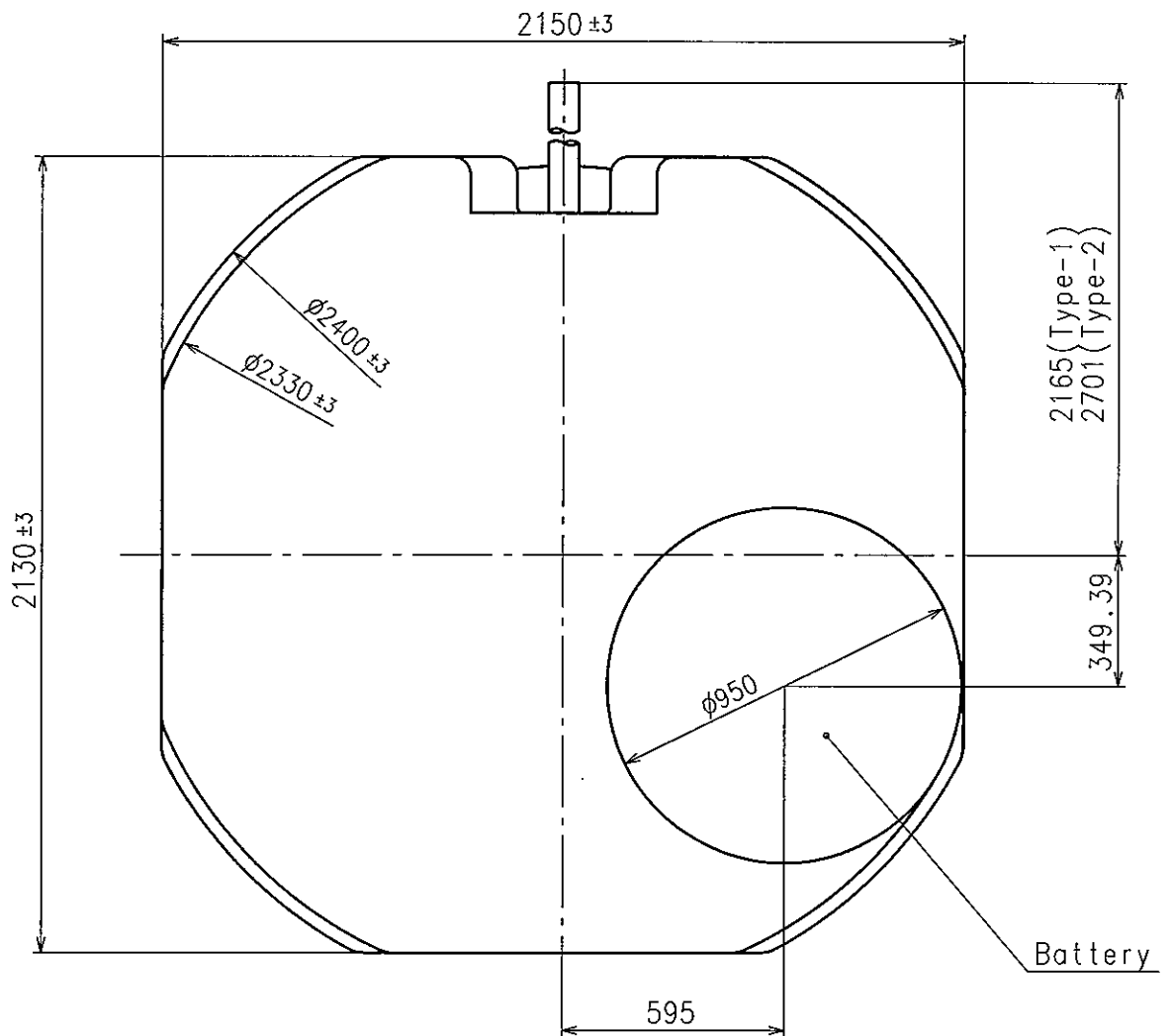


✱ : Combination of dial leg hole A-B, (A-C)

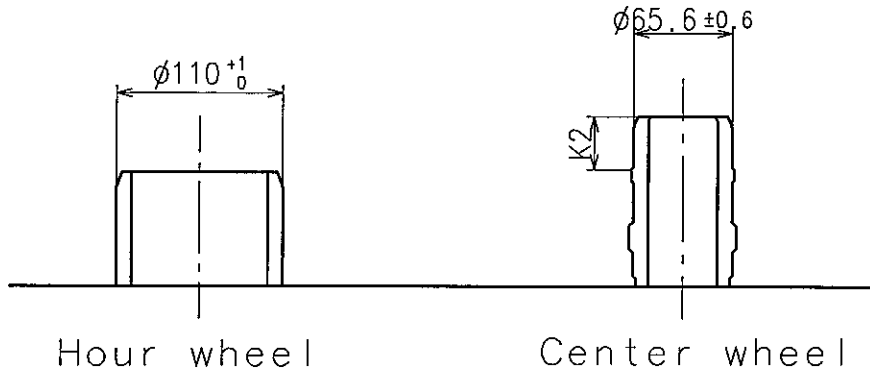


Center post		Type S (1) VX3KG1*
Maximum height from dial support	H1	112
Total height incl. movement	H2	374

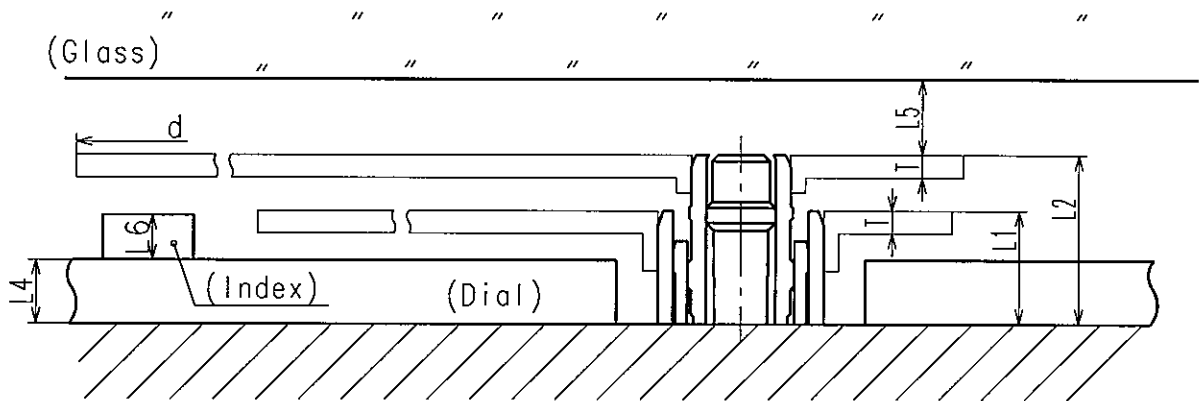
*1: First pullout stroke
*2: Second pullout stroke



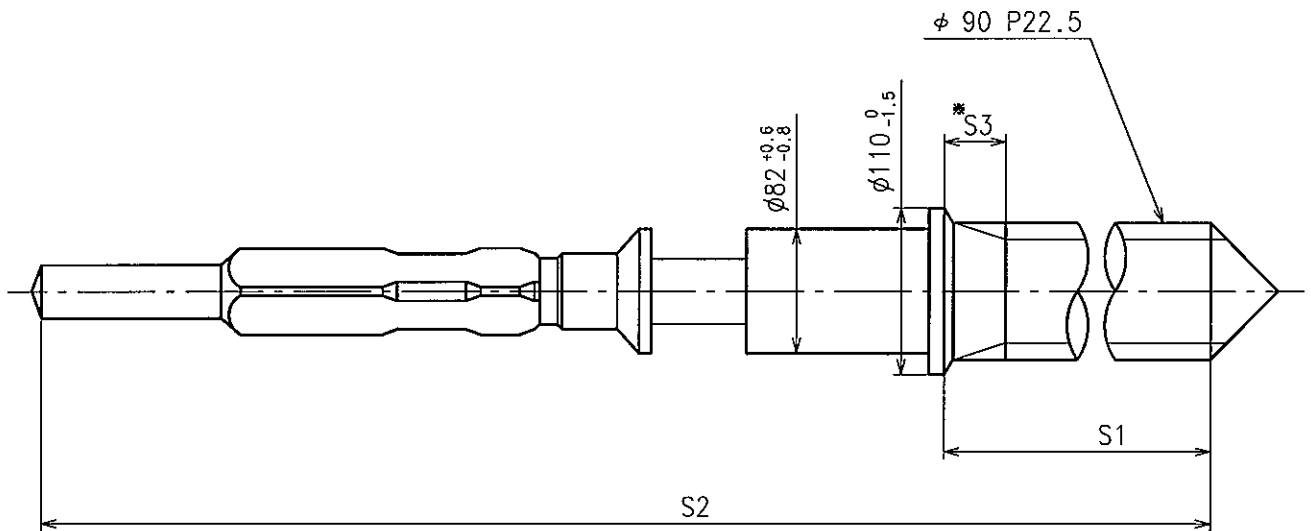
- * Hour hand unbalance $\leq 50\mu\text{ g} \cdot \text{m} (0.5\mu\text{ N} \cdot \text{m})$
- * Minute hand unbalance $\leq 60\mu\text{ g} \cdot \text{m} (0.6\mu\text{ N} \cdot \text{m})$



	Parts No.		Dimension
	Hour wheel	Center wheel	K2
Type S (1) VX3KG1*	0271929	0221929	35



	L1	L2	L4	L5	L6	T	d
Type S (1) VX3KG1*	75	112	40	MIN: 50	MAX: 30	15	MAX: $\phi 2500$



※ Not threaded

	Part No.	S1	S2	※ S3
Type-1 (Standard)	0351177	1366	1964	60
Type-2	0351577	1902	2500	1000

Material : Steel

Hardness : Vickers 600±50

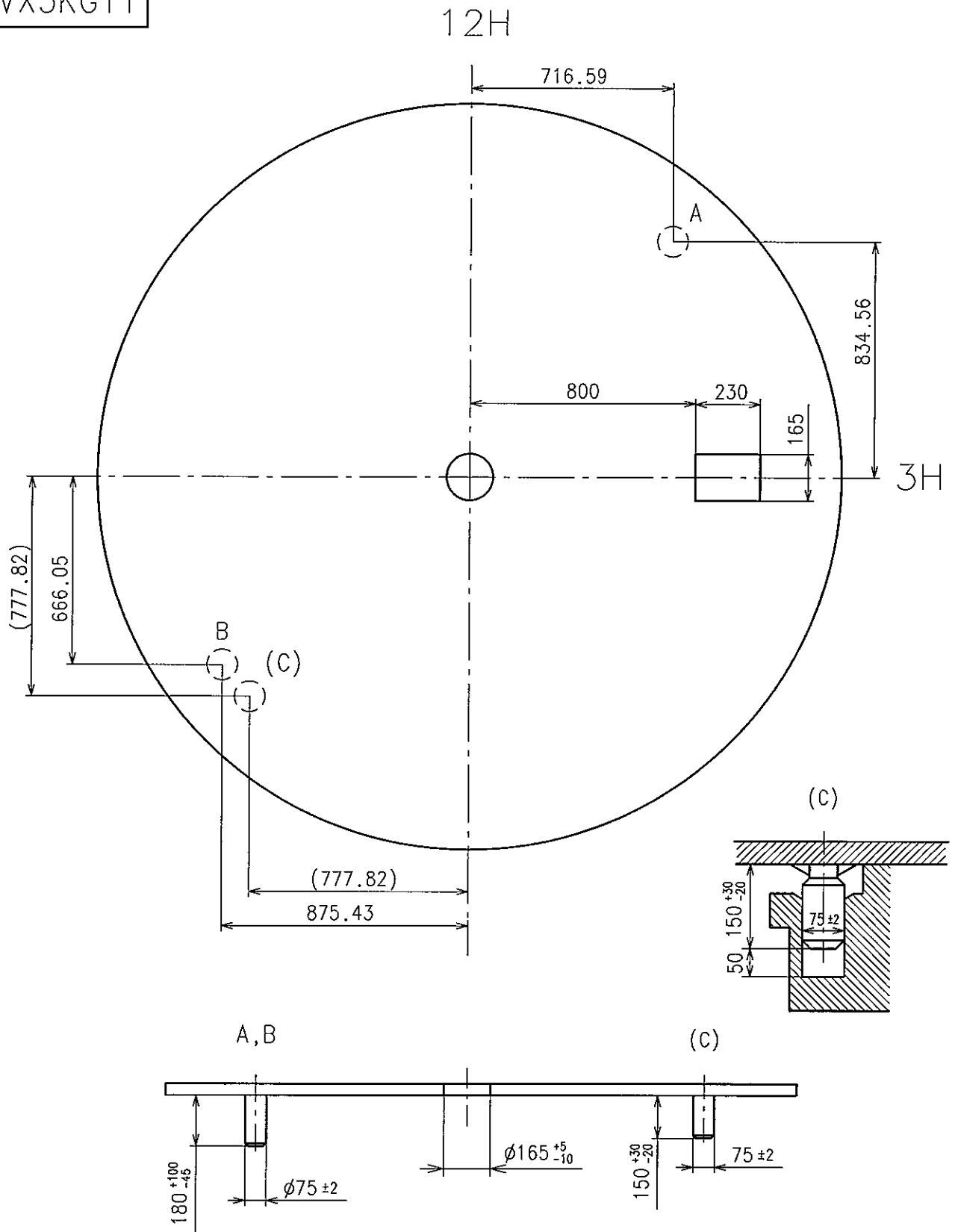
Cal.
VX3KG

Dial-01

Date: 31/Jul./'08

Rev.: 00

TM Ref.
VX3KG11



※ Use dial leg hole as like below A-B or (A-C)

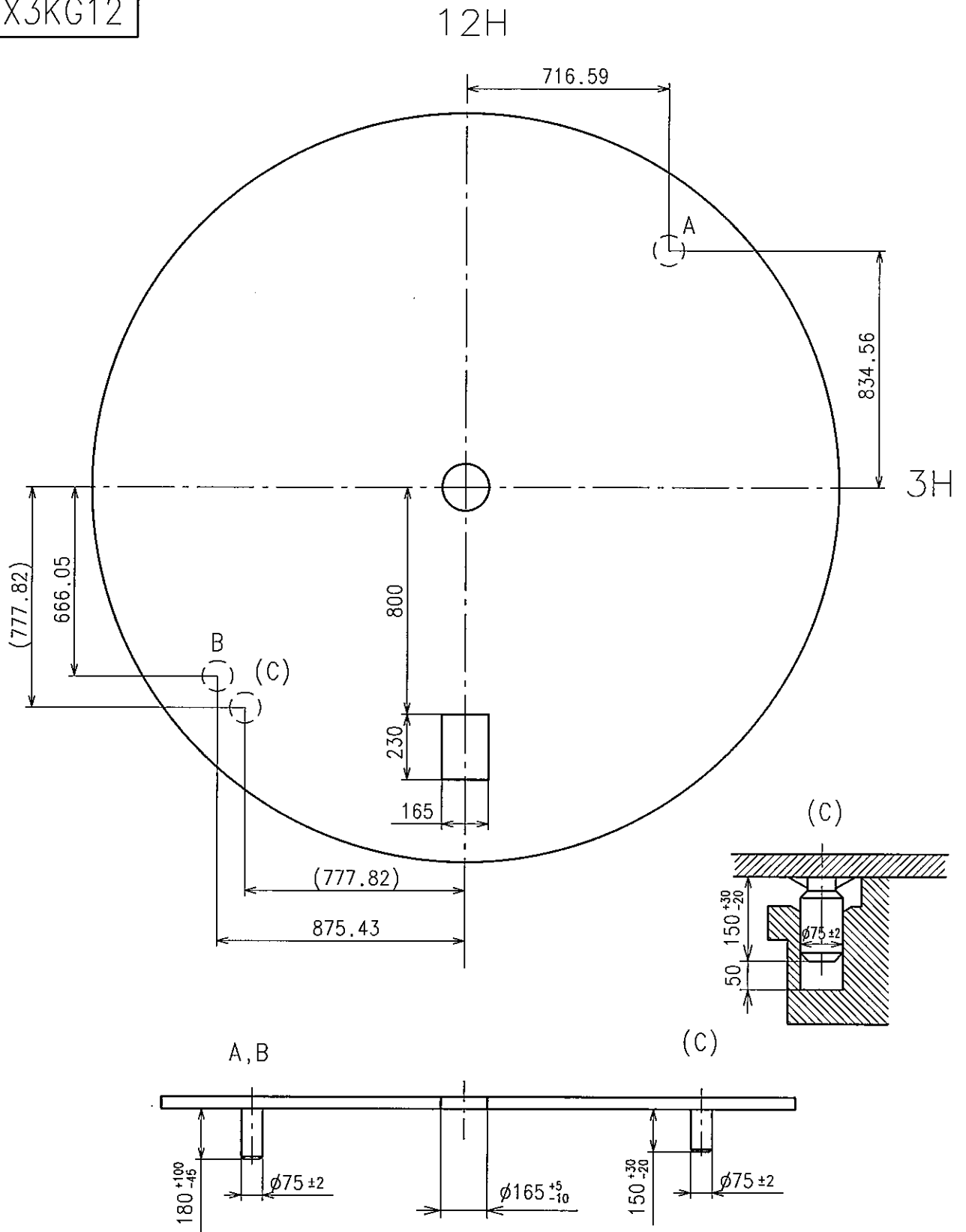
Cal.
VX3KG

Dial-02

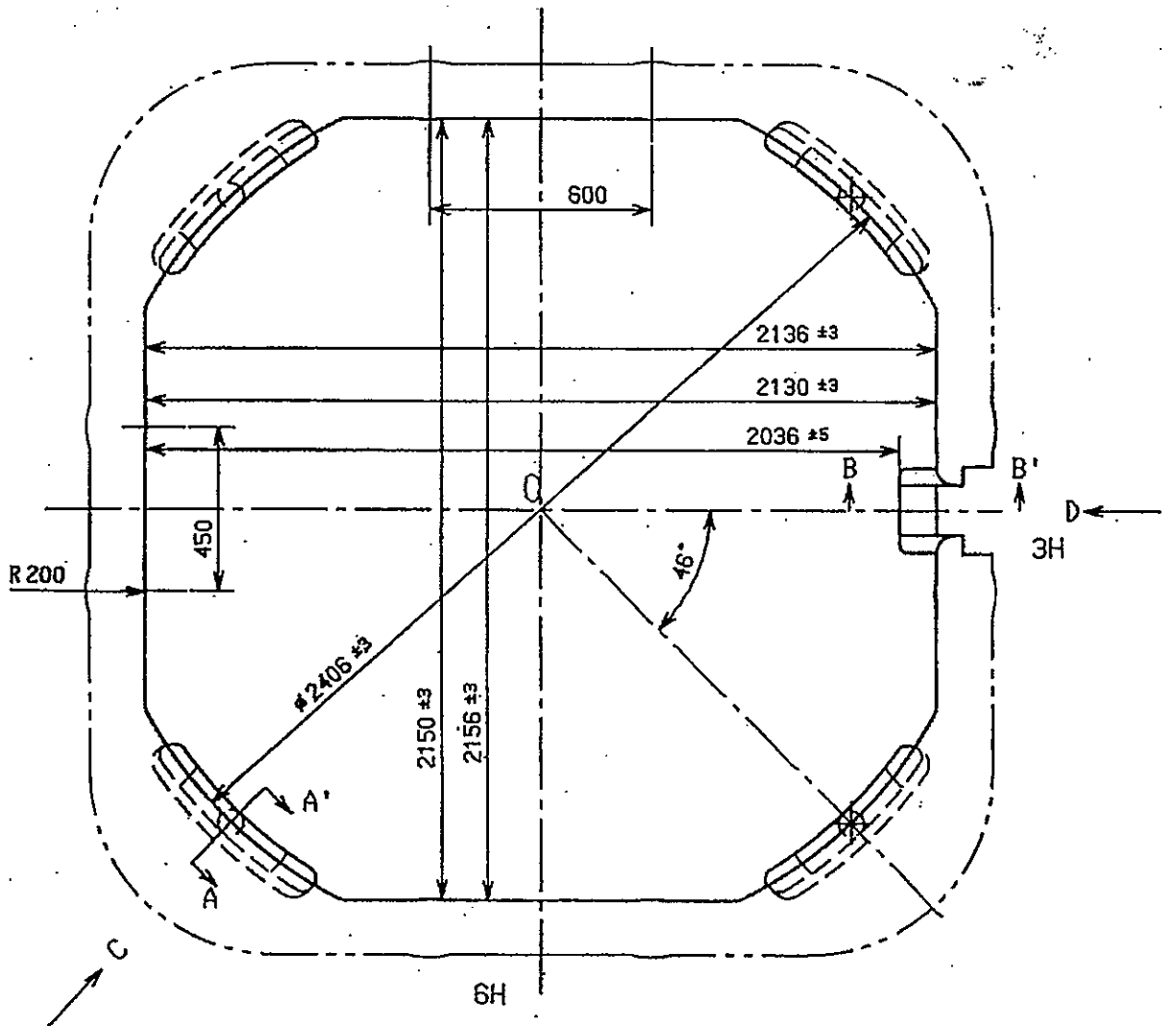
Date: 31/Jul./'08

Rev.: 00

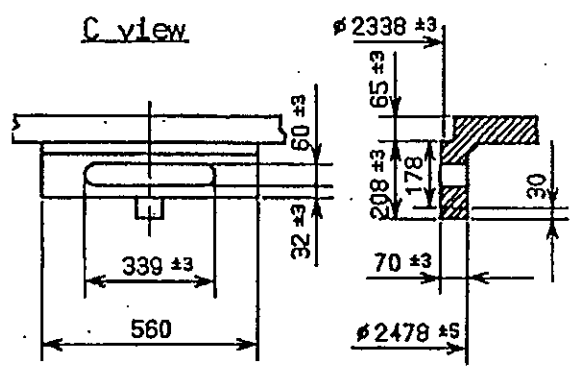
TM Ref.
VX3KG12



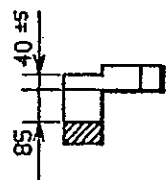
※ Use dial leg hole as like below A-B or (A-C)



A-A' section



B-B' section



D view

